



Too Many Students Believe Science Isn't For Them

We address a persistent challenge in K–12 science education: too many young people never see themselves as capable of doing science. Science isn't just about memorizing facts. **For students to persist, they need to see themselves in science, to feel they can question, explore, and belong.**

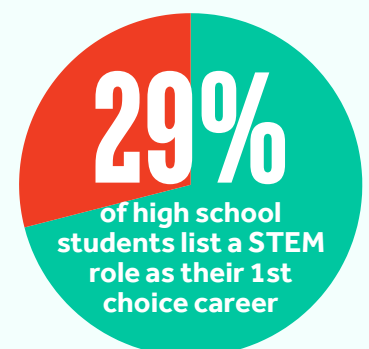
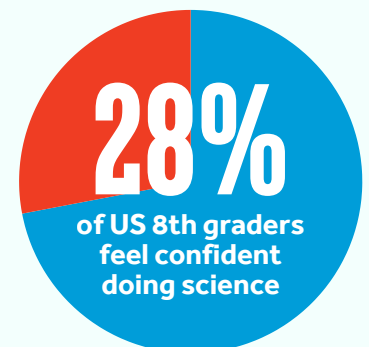
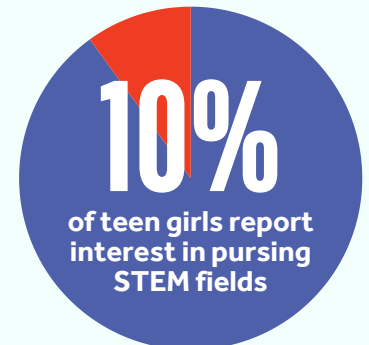
Too many never make that leap. And while teachers want to change that, they often lack the tools and training to make science feel human and relevant.

We help teachers transform how science is experienced in classrooms so more students see themselves in science and choose to keep going.

“The Science Communication Lab’s focus on representation and storytelling aligns with what I try to do daily. I want to demystify science by connecting it to personal journeys and local relevance. **Film humanizes data and gives students permission to see failure, revision, and persistence as integral to the scientific process and how they live their lives.**”

~ Brittany Beck, New York

NATIONAL DATA UNDERSCORE THE URGENCY:





We Connect Students to the People, Process, and Real-World Relevance of Science

OUR APPROACH

We partner with educators to help young people see who scientists are, how science works, and why it matters in everyday life.

We work alongside teachers to co-create story-driven curriculum, equipping them with professional development and classroom-ready tools to make science personal, rigorous, and relevant.

We help students:

- Engage more deeply with science
- Develop critical thinking and science literacy skills
- Strengthen their understanding of how science works
- Expand their views of who belongs in science
- Build confidence as science learners

We know that when students see science as human, relevant, and accessible, they are more likely to stay engaged in STEM over time.

OUR PROGRAMS

National Educator Ambassador Program:

Scale teacher leadership nationwide



School District Partnerships:

Accelerate district-wide science adoption



Community Engagement:

Grow community science participation



“ Students definitely respond [to the films]... It really draws them in and creates those personal connections to the ideas.”

~ Dan Vanden Heuvel, Idaho



SCL at a Glance

10.5K+

educators in our network

6000+

schools and institutions reached

690K+

people reached in 2025

1000+

educational videos and films produced

3000+

community events hosted

28.5M+

views on YouTube

National Educator Ambassador Program

Our Ambassador Program empowers educators to bring authentic scientist voices into their classrooms through story-driven films and collaborative curriculum design. **The program has demonstrated impact in four key areas:**

- Increased student engagement
- Stronger understanding of how science works
- Greater science identity and sense of belonging
- Improved critical thinking and persistence in learning

Ambassadors describe the experience as transformative and collaborative, expanding their professional growth and teacher leadership.

“It strengthened my teaching practice, expanded my teacher network, and **gave me concrete tools that immediately improved student engagement and scientific thinking**”

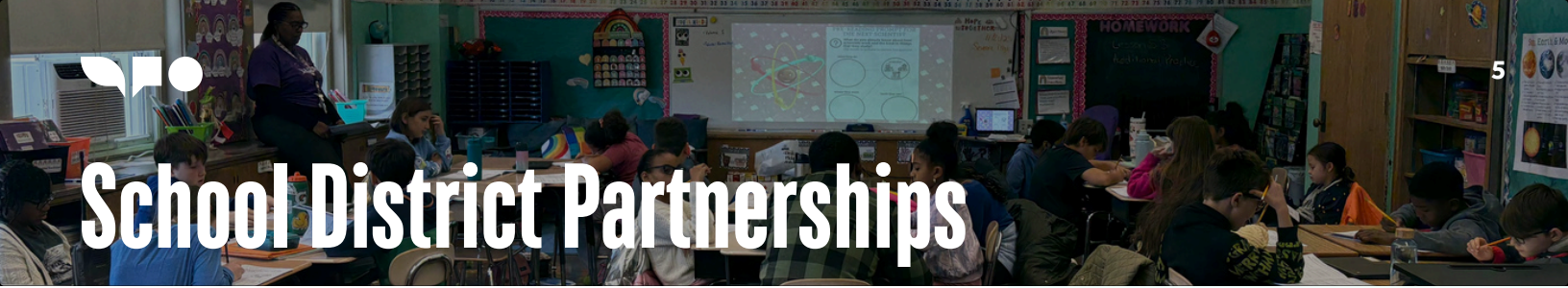
~ Renee Haines, West Virginia



“[My] students were really engaged and they connected with the stories, and they understood the content. **And there was overall more joy from the learning.**”

~ Minu Basu, California





School District Partnerships

We work alongside teachers to co-create rigorous, inclusive resources that integrates into core science curriculum and makes science personally meaningful for diverse learners.

The program is designed to:

- Connect elementary, middle, and high school educators in a shared, coherent instructional approach
- Integrate story-driven film-based, hands-on lessons into district priorities and standards
- Support teachers through collaborative workshops and ongoing coaching
- Build a scalable model that drives systemic change across schools and districts

INCREASING SCIENCE IDENTITY & BELONGING AT TITLE 1 SCHOOLS

To help students from historically underrepresented backgrounds see themselves in science, educators at a California Title I middle school developed a curriculum centered on the film *Decoding Ancestral Knowledge*.

The result was both deeper engagement and higher rigor. **Multilingual learners performed at the highest levels in the district on common assessments**, showing that this model can drive academic excellence alongside belonging and confidence in science.



Beyond the Classroom: Community Engagement



“The Observer event was very special. In the space of a few hours, I felt close to a group of strangers and **felt encouraged to investigate the world in a heightened sense of curiosity and scrutiny.**”

~ Event Attendee

We bring science into public and community spaces through film screenings, hands-on experiences, and facilitated dialogue, connecting students, families, educators, and scientists in shared learning.

Our community programs have **demonstrated impact in three key areas:**

- Increased engagement with science among students and the public
- Broadened perceptions of who scientists are and who science is for
- Strengthened science identity, belonging, and understanding across generations

In 2025 alone, we hosted 75+ community events that made science visible, relevant, and local.



Join Us in Making Science Accessible and Relevant to All Students

PHILANTHROPY IMPACT

Our outcomes drive STEM persistence by strengthening engagement, science identity, understanding of how science works, and real-world relevance so students see science as something they can belong to and pursue.

With support from grants and long-standing foundation partners who helped build and sustain this work, we are now ready to scale nationally to reach **50% of middle and high school science classrooms** within five years.

YOUR PARTNERSHIP WILL...

SUPPORT TEACHER-LEADERS NATIONWIDE

in creating immersive lessons and cultivating a community of practice.

SCALE STANDARDS-ALIGNED CURRICULUM

across districts to strengthen instructional coherence and student engagement.

BRING SCIENCE INTO PUBLIC SPACES

through events that connect students, families, and scientists in meaningful, shared experiences.

SUPPORT US

Your **tax-deductible donation** fuels curiosity, supports educators, and connects communities through science.

support@scicommlab.org

OUR PARTNERS & SUPPORTERS

- GORDON AND BETTY MOORE FOUNDATION
- SFF San Francisco Foundation
- NSF U.S. National Science Foundation
- NIH National Institute of General Medical Sciences
- ALFRED P. SLOAN FOUNDATION
- RITA ALLEN FOUNDATION
- hhmi
- HEISING-SIMONS FOUNDATION
- PBS
- NETFLIX
- LASKER FOUNDATION
- BBC
- NATIONAL ACADEMIES
- BURROUGHS WELLCOME FUND